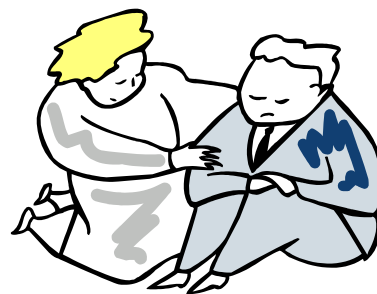

3. Support Learning in a Social Services Practice Context



- φ Current legislation, policy and guidance, including equalities legislation relevant to a social services practice context
- ◆ Scottish Social Services Council (SSSC) Code of Practice and its application
- ◆ Current research on the application of legislation, policy and guidance relevant to practice context
- ◆ Perspectives of others, including service users and carers, on the application of legislation, policy and guidance
- ◆ Current practice material demonstrating good practice examples in specific legislative, policy and guidance contexts
- φ How legislation, policy and guidance define the responsibilities, accountability and authority of professional roles
- ◆ Methods for enabling others to practise within a framework of accountability
- ◆ Rights, responsibilities, freedom, authority and power in the practice of workers as ethical and professional/statutory agents
- ◆ Organisational structures and expectations
- ◆ Current practice material demonstrating complex ethical conflicts and dilemmas within specific practice contexts
- φ Positive and negative impacts of specific legislation, policy and guidance for practice
- ◆ Current campaigns for change in relation to legislation and policy
- ◆ Processes through which legislation and policy are developed
- ◆ Methods for developing analytical and critical awareness skills